

Statics—TAM 210 & TAM 211

Drs. Blake Everett Johnson and Mariana Silva
Spring 2017

TAM 210/211 Team



Dr. Blake Everett Johnson



Dr. Mariana Silva

Teaching Assistants



Sai Rajan



Ray Fesick

Wenjun Kim



Chris Peterson

John Sharley

Course Aides



Lucas Chae



Luis Chavez



Kyle Depolts



ekim202@hawaii.edu



nae102@hawaii.edu

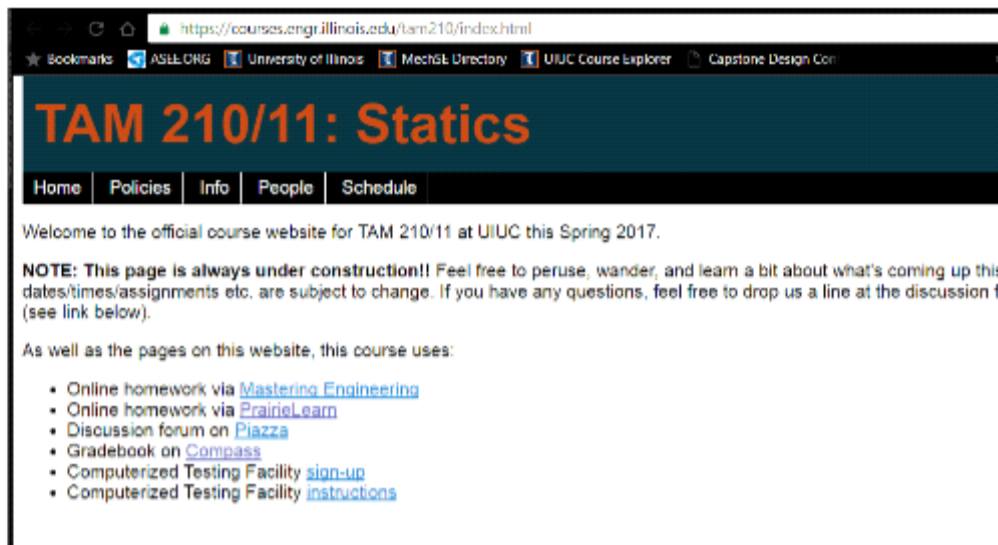


jnae@hawaii.edu



Course websites

MAIN PAGE - <https://courses.engr.illinois.edu/tam210/index.html>



https://courses.engr.illinois.edu/tam210/index.html

Bookmarks ASELL.ORG University of Illinois MechE Directory UIUC Course Explorer Capstone Design Con

TAM 210/11: Statics

Home Policies Info People Schedule

Welcome to the official course website for TAM 210/11 at UIUC this Spring 2017.

NOTE: This page is always under construction!! Feel free to peruse, wander, and learn a bit about what's coming up this dates/times/assignments etc. are subject to change. If you have any questions, feel free to drop us a line at the discussion fo (see link below).

As well as the pages on this website, this course uses:

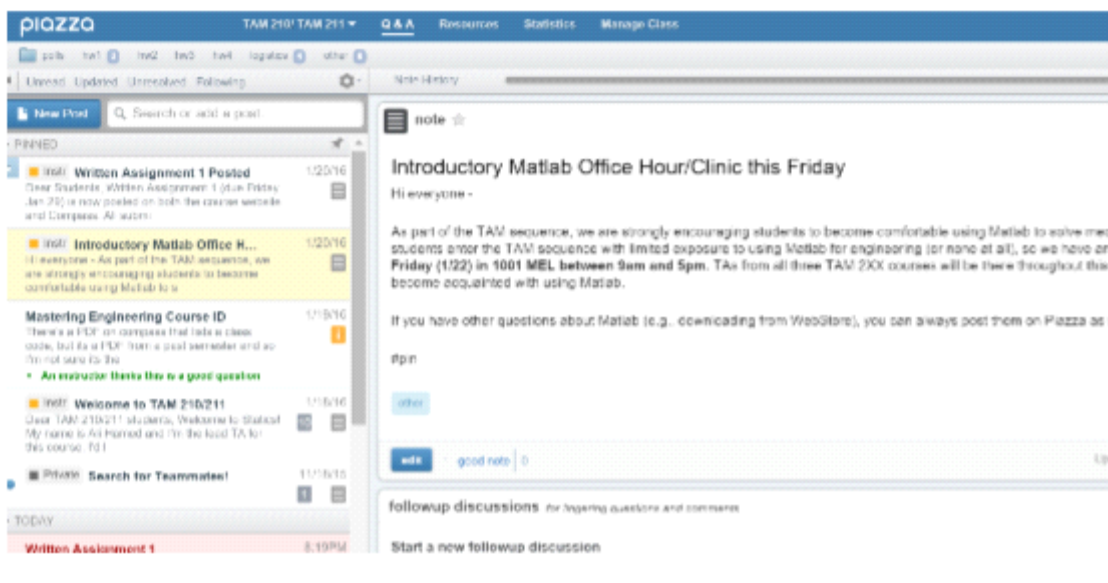
- Online homework via [Mastering Engineering](#)
- Online homework via [PrairieLearn](#)
- Discussion forum on [Piazza](#)
- Gradebook on [Compass](#)
- Computerized Testing Facility [sign-up](#)
- Computerized Testing Facility [instructions](#)



Piazza <https://piazza.com/illinois/spring2017/tam210ta>

ALL communication in the course will be via

- Open discussion of questions from class: if you have something you do not understand, chances are other people do not, and someone else may have the answer.
- Regularly checked by TAs, CAs, and Instructors.



Grades

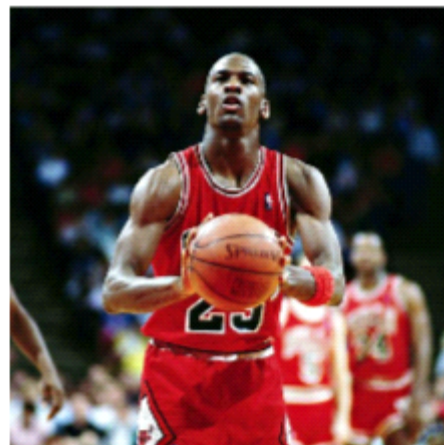
- Lots of opportunities for points, don't lose the little ones
- A tenant of this class to be successful is:
PRACTICE, PRACTICE, PRACTICE

<u>TAM 210</u>			
In-lecture iClickers	4%		BI-N
Discussion group activity	8%		Fin
Online homework	10%		
Written assignments	8%		
<u>TAM 211</u>			
In-lecture iClickers	4%		BI-N
Discussion group activity	8%		Fin
Online homework	10%		
Written assignments	8%		



As of 2011, Yo-Yo Ma had practiced approximately 50,000 hours (according to Malcolm Gladwell)

http://www.harvardclubofsandiego.com/images/article_images/148.jpg



“ s h t f “ t i

Grade distribution

Final grades: The total score s corresponds to final grades as follows.

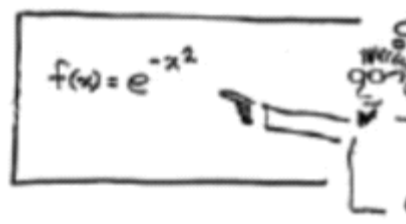
97% $s < 100%$	A+	92% $s < 97%$	A	89%
86% $s < 89%$	B+	82% $s < 86%$	B	79%
76% $s < 79%$	C+	72% $s < 76%$	C	69%
66% $s < 69%$	D+	59% $s < 66%$	D	55%
$s < 55%$	F			

Grades: on Compass2g

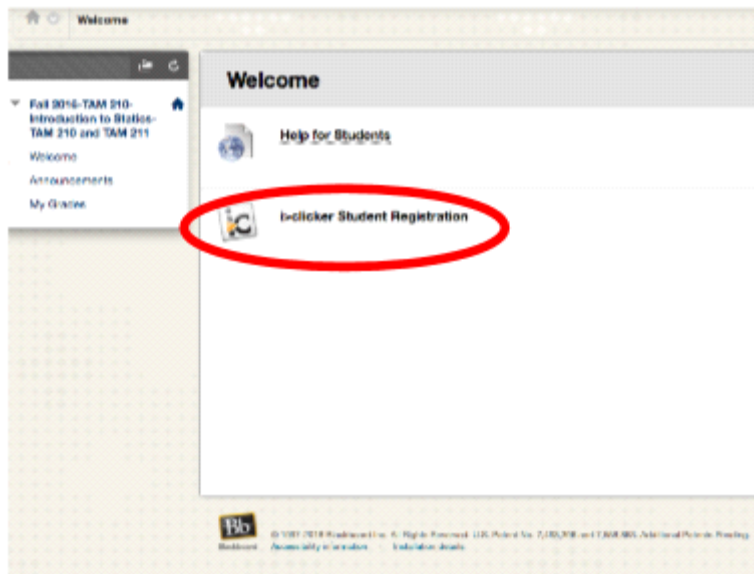
- Any errors in grade reporting on Compass **must be report weeks** of the due date or by the last day of class, whichever
- Missing grade for discussion section or a written assignment one of the TAs in your section (personally or via Piazza).
- Missing grade from online homework, an exam, or i>click the instructor (via Piazza).

I-Clickers – 4%

- Used for in-class assessment
- 50% participation, 50% correctness
- You should register your i>clicker on **Compass 2g**



"Make Clickers Work"
Dr. Stephanie Chaste



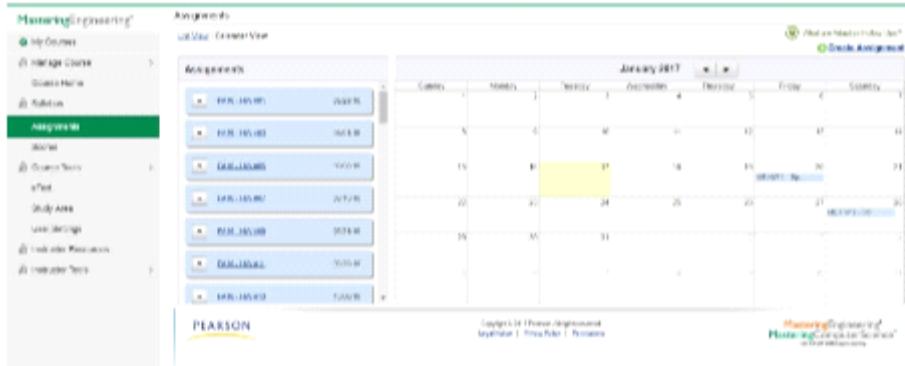
Discussion group activity – 8% of g

- Work in groups of 3–4 students
- Goals:
 - **Gain experience in team-work**
 - **Apply engineering concepts learned in lecture to real-world problems or hands-on activities**
- Be prompt: if you are more than 5 minutes late, you will receive a 0 😞
- You need to attend the discussion in which you are registered, otherwise, your assignment will not be graded



Online Homework (ME and PL) – 1

- Instant feedback
- Infinite number of attempts
- **First required HW is due this Friday January 20th**

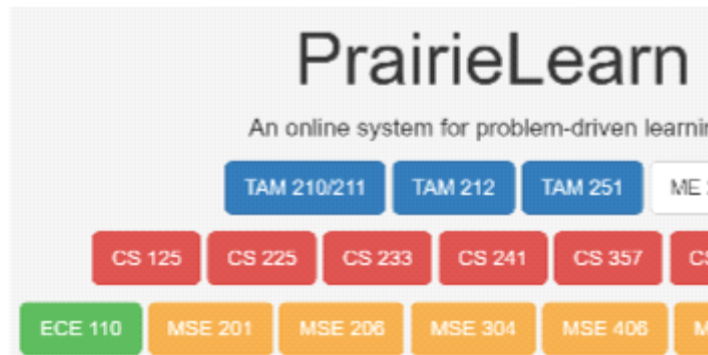


**Register for
MasteringE**

http://www.pil/ui_eng_mec

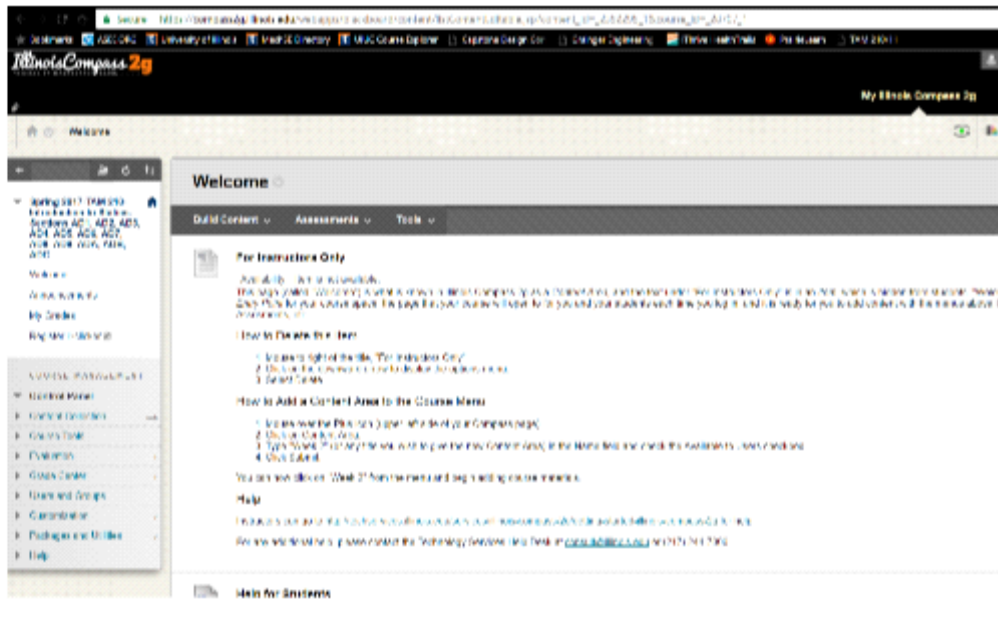
ME due THURSDAYS

PL due TUESDAYS



Written Assignments – 8%

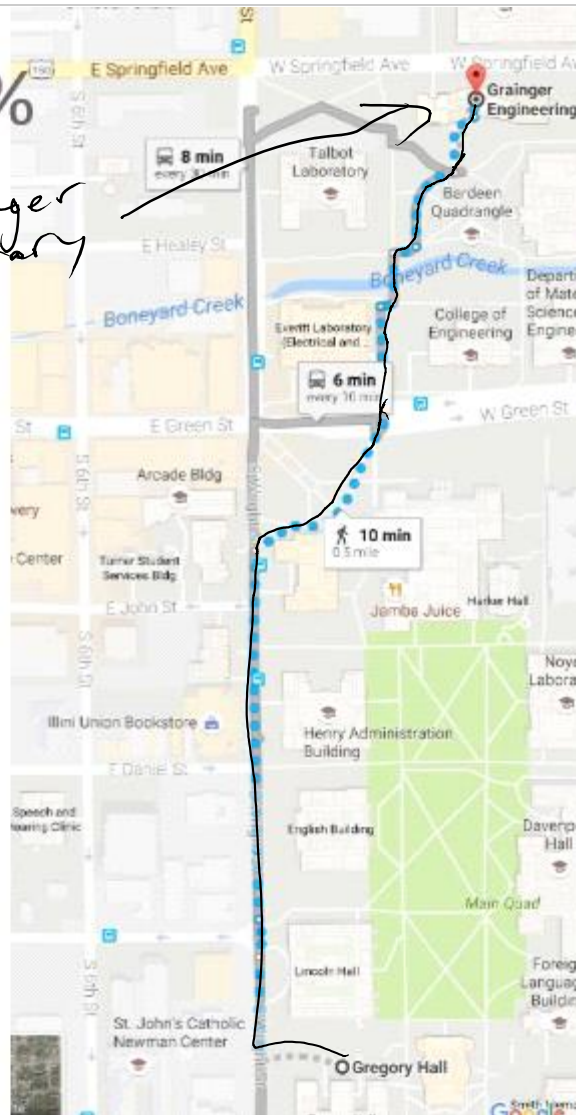
- Student will submit an **individual written report on a weekly basis** using
- Goal:
 - **Practice the communication of engineering concepts in writing**
 - The reports will be graded based on approximately:
 - 40% presentation, neatness, correct use of symbols, quality diagrams, and clarity of explanation
 - 60%: Correct interpretation of the problem and correct final



CBT Quizzes - 40%

57 Grainger Library

- Bi-weekly
- **No calculators!**
- Sign up for a quiz time online
- Quizzes will be available **Tuesday – Saturday**
 - No conflict/make-up quizzes will be given
- Helps you assess your understanding of the material in real time so you can get partial credit!!



Final – 30%

TAM 210 final

- Location – TBD
- Time – 7 pm Thursday, April 13th (12th week)

TAM 211 final

- Location – TBD
- Time – 8 am Thursday, May 11th (finals week)

Conflict exams will be scheduled for students with legitimate (documented) conflicts. These are usually on the same day but earlier than the regular exam. Contact the instructor via Piazza to schedule a conflict exam no later than one week before the exam date.

Support for students:

- Piazza
- Study Hall (429 Grainger)

Daily office hours are held in Grainger 429 according to the schedule below. Office hours end at 8:00 PM (Sunday Jan 24) of the semester.

	Sunday	Monday	Tuesday	Wednesday	Thursday
4:00 - 5:00		Matt		Chris	
5:00 - 6:00	Vedant + Luis	Cody + Matt		Chris	
6:00 - 7:00	Vedant + Luis	Cody + Lucas	Kyle + Vincent	James/Jeff	Yufei/E
7:00 - 8:00			Kyle + Vincent	James/Jeff	Yufei/E

- Matlab clinic
 - Jan 23 – 27
 - MEL 1001

	Monday	Tuesday	Wednesday	Thursday
	1/23	1/24	1/25	1/26
9:00 AM				
10:00 AM				
11:00 AM				
12:00 PM				
1:00 PM				
2:00 PM				
3:00 PM				
4:00 PM				
5:00 PM				

- Homework ~~1~~ – Vector math (use Matlab, trust us!)
- Written assignment based on Matlab code (same problem HW ~~1~~)
 - ~~Due January 28~~
 - Available on Compass and must submit to Compass
 - Course website has a Matlab help document (see schedule)

How to make the most from lecture.

- Attend!
- Use technology - bring your tablets, laptops, e
- Bring paper and pencil/pen
- Participate
 - Ask questions
 - Be prepared to answer questions
 - I don't know is okay too!

- Any questions?